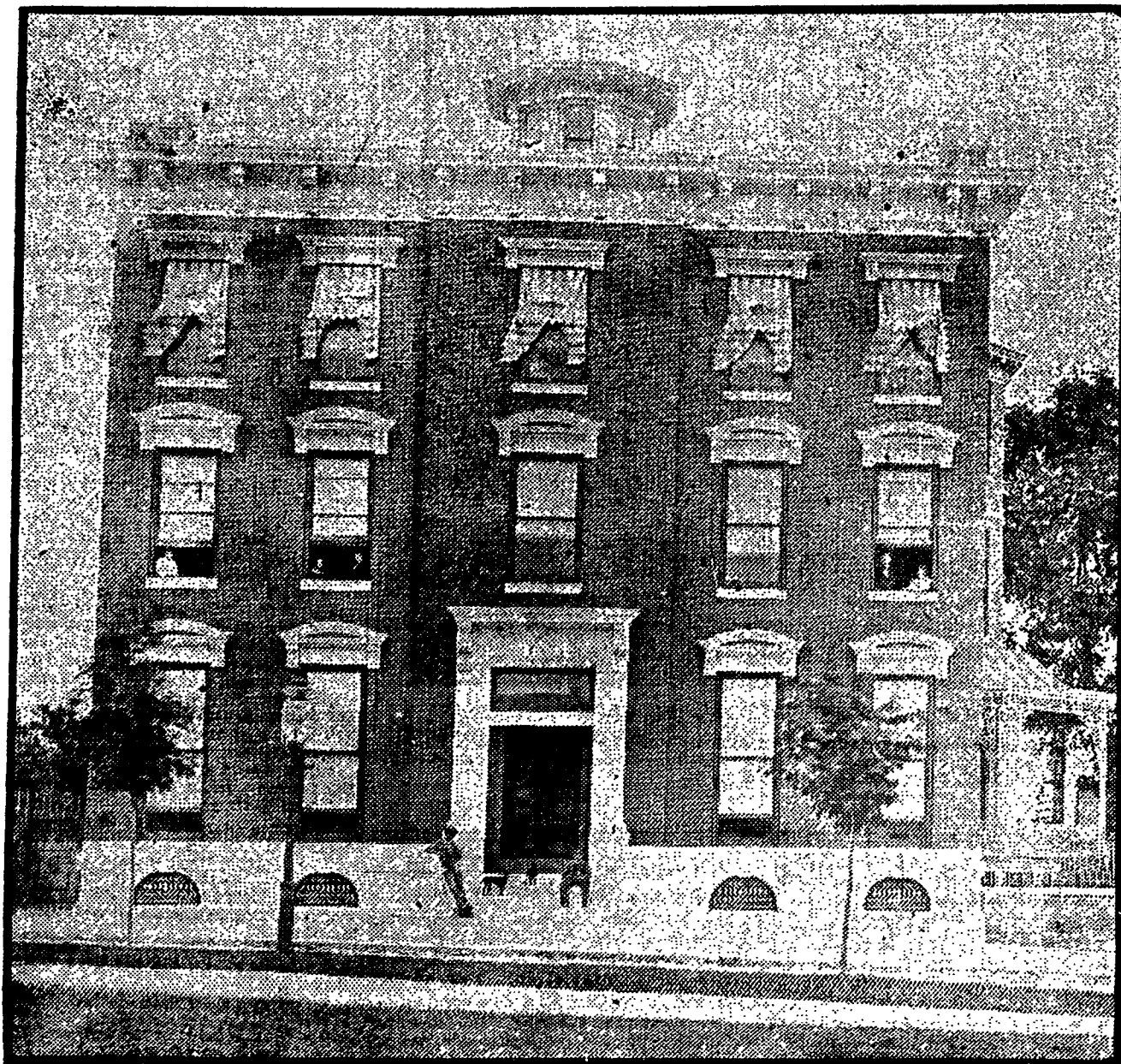


THE POPPLEIN MANSION

The Sun (1837-); Nov 29, 1905; ProQuest Historical Newspapers: The Baltimore Sun
pg. 7

THE POPPLEIN MANSION



MAY GIVE WAY TO APARTMENT HOUSE

The accompanying illustration shows the Popplein mansion, on Eutaw Place, near Wilson street, which will be razed if Dr. Thomas Shearer decides to erect the eight-story apartment house which has been planned for that site.

This building was erected for the late

Nicholas Popplein in 1880 and is one of the best-constructed residences in the city, as well as one of the largest. The structure has a frontage of about 45 feet and is constructed of brick, with white marble trimmings. It contains about 24 rooms, all of which are large. Dr. Shearer acquired the

property about three years ago. The lot has a frontage of over 100 feet on Eutaw Place.

The apartment house which has been designed for the site will be eight stories high and will be one of the largest buildings of this class in the city.

Reproduced with permission of the copyright owner. Further reproduction prohibited without permission.